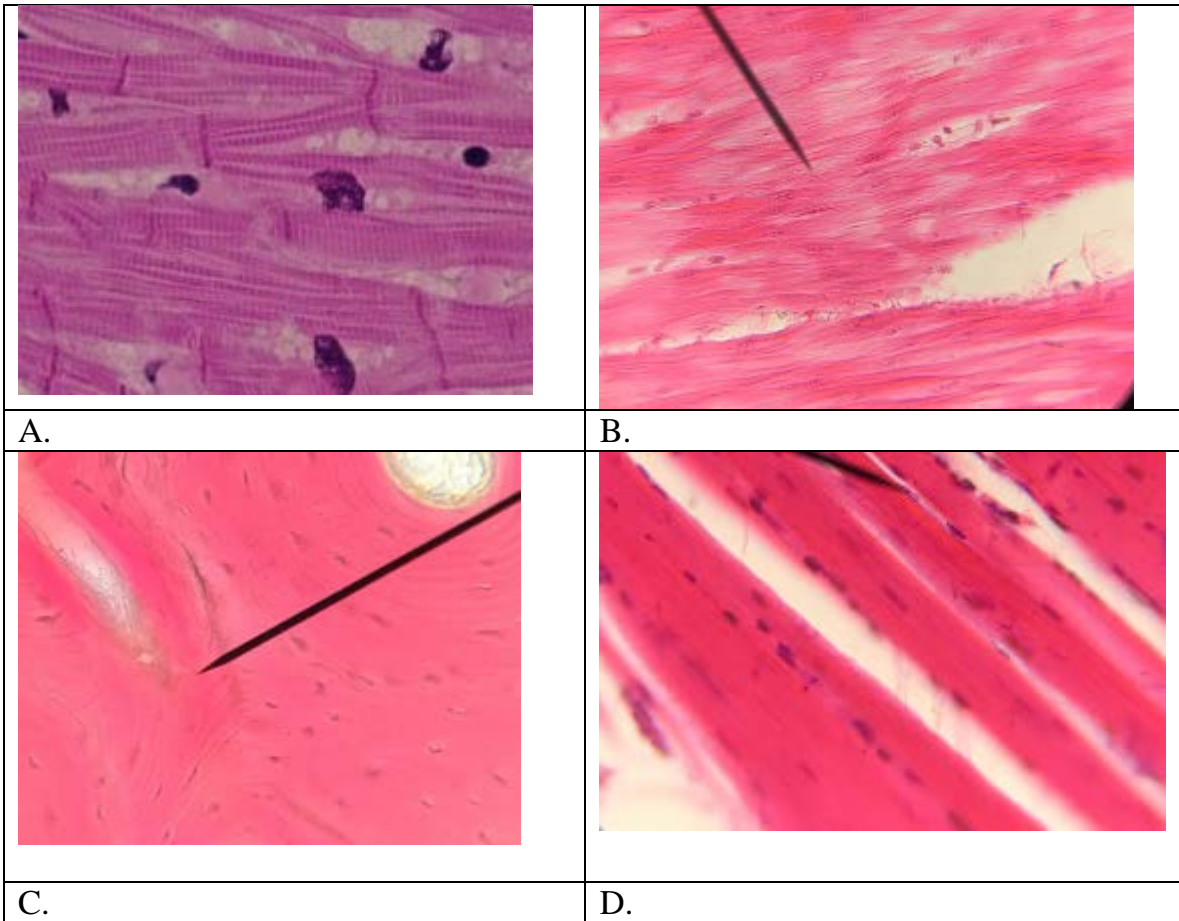


## Unit 2: Tissues

### Lesson 1: *Muscle Tissue (Part 2)- Key*

#### Activity 1 (20'): **Observation muscle tissue**

Step 1 (10'). Match the slide on the microscope with the following image. Each image represents one type of muscle tissue. There is one distractor.



Step 2 (10'): identify the type of muscle tissue and justify your answer.

A: Cardiac. It is striated, but only one nucleus for each cell, and it has branches.

B: Smooth. It is not striated

C: Compact bone

D: Striated or skeletal: It has striations and many peripheral nuclei

**Activity 2 (30'): Skeletal muscle**

*Step 1 (25'). Watch the following video twice with pauses*

*[https://www.youtube.com/watch?v=f\\_tZne9ON7c](https://www.youtube.com/watch?v=f_tZne9ON7c) and then draw the organization of skeletal muscle (muscle bundle, fascicle, muscle fiber, myofibril, sarcomere)*

**During the pauses, each student draws on his/her notebook the different organization**

*Step 2 (5'). In pairs, write true (T) or false (F). Correct the false statement(s)*

1. F: muscle fiber is the muscle cell
2. F. It is a connective tissue
3. T
4. F: myosin is the thick filament
5. F: the Z line represents the thin filament
6. T